

ST-11P2 Hinge

Position control · Constant torque

Features

- Designed for overmoulding
- Brings constant torque performance to a wide range of applications
- Space efficient design provides high torque in minimum space
- Never requires adjustment

Material

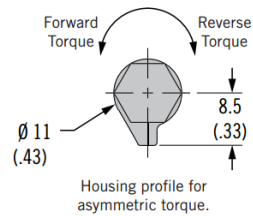
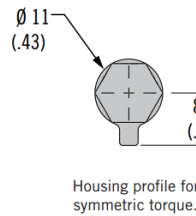
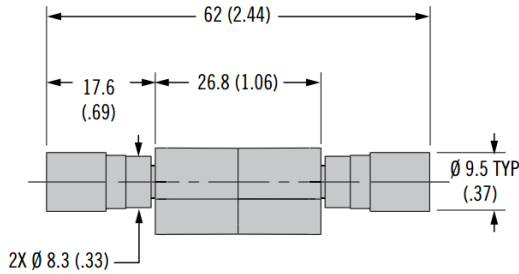
- Zinc alloy and hardened steel

Product Performance

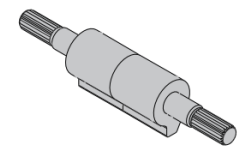
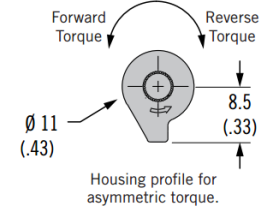
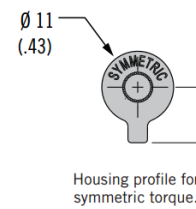
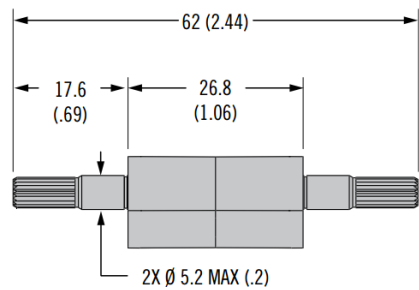
- Cycle performance: 20,000 cycles



HEX SHAFT STYLE

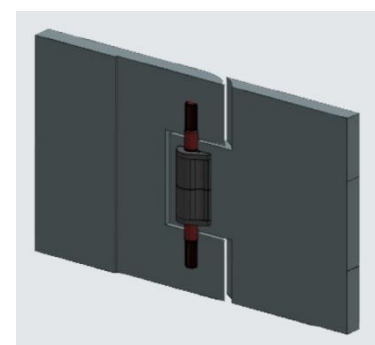


KNURLED SHAFT STYLE



Symmetric Torque Versions		
Part Number	Shaft Style	Static Torque N·m (in·lbf)
ST-11P2-350SA-33	HEX	3.95 (35)
ST-11P2-300SA-33	KNURL	3.39 (30)
ST-11P2-250SA-33	KNURL	2.82 (25)
ST-11P2-200SA-33	KNURL	2.26 (20)
ST-11P2-150SA-33	KNURL	1.69 (15)

Asymmetric Torque Versions			
Part Number	Shaft Style	Forward Torque N·m (in·lbf)	Reverse Torque N·m (in·lbf)
ST-11P2-400FA-33	HEX	4.52 (40)	3.16 (28)
ST-11P2-350FA-33	HEX	3.95 (35)	2.77 (24.5)
ST-11P2-300FA-33	KNURL	3.39 (30)	2.37 (21)
ST-11P2-250FA-33	KNURL	2.82 (25)	1.98 (17.5)
ST-11P2-200FA-33	KNURL	2.26 (20)	1.58 (14)
ST-11P2-150FA-33	KNURL	1.69 (15)	1.19 (10.5)
ST-11P2-400RA-33	HEX	3.16 (28)	4.52 (40)
ST-11P2-350RA-33	HEX	2.77 (24.5)	3.95 (35)
ST-11P2-300RA-33	KNURL	2.37 (21)	3.39 (30)
ST-11P2-250RA-33	KNURL	1.98 (17.5)	2.82 (25)
ST-11P2-200RA-33	KNURL	1.58 (14)	2.26 (20)
ST-11P2-150RA-33	KNURL	1.19 (10.5)	1.69 (15)



TORQUE HINGES